

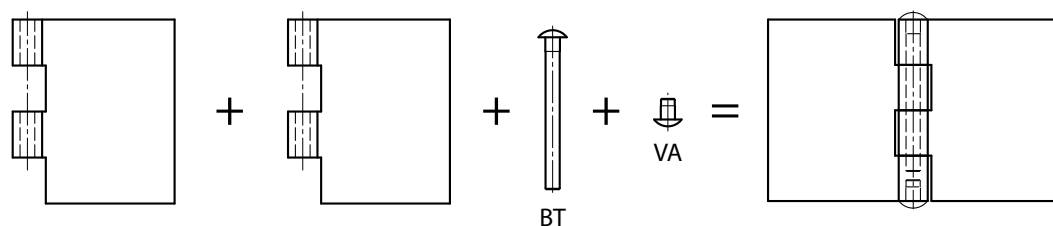
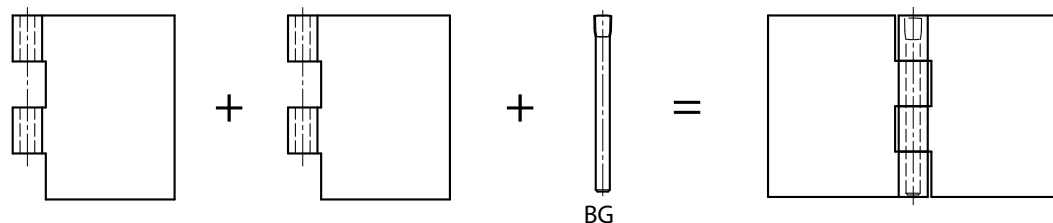


Hinges / Heavy duty hinges

Modulo range : hinges composed of parts to be assembled by customer (or on request)

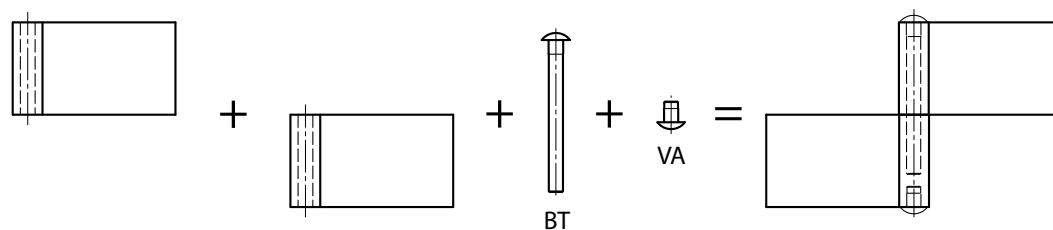
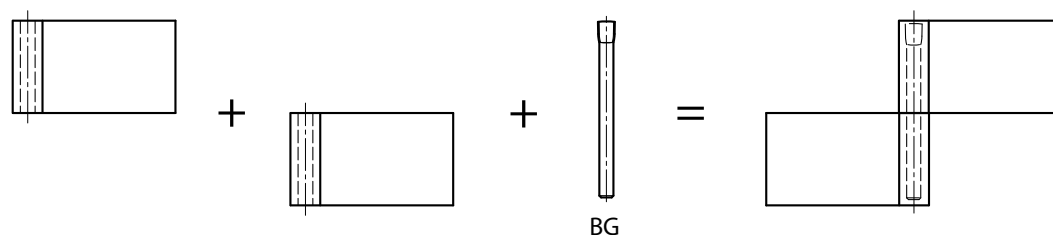
Modulo hinges :

Pin is made of either an expanded pin (BG) or a headed pin (BT) with a plug (VA).



BG : Expanded pin
BT : Headed pin
VA : Plug

Modulo pin hinges :



Parts can be delivered assembled, on request.

NOTE :

- Only leaves with the same thickness can be fitted together
- The expanded pin (BG) can be assembled or disassembled with a hammer
- The headed pin BT and the plug VA are fitted together with a hammer and make the pin non removable

Modifications:

This range of hinges has been designed to make modifications easier (cranking, drilling..) for our customers.

However any in-house modification is possible with a MOQ of 250 units for stainless steel material and 500 units for steel material.

Please ask for more information.



Leaves for Modulo hinges - thickness 3mm

Leaves can be combined together and with either a 6mm diameter expanded pin (BG) (part numbers 27-1-3820, 27-1-3823) or a 6mm diameter headed pin (BT) (part numbers 27-1-3826, 27-1-3829) with a plug (part numbers 27-1-3832, 27-1-3835).

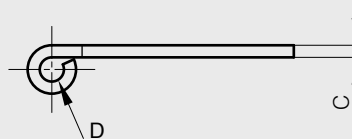
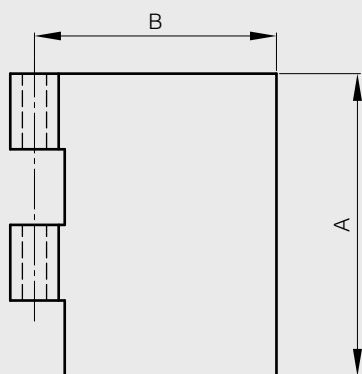
| A | B | C | D | part number | material | finish | weight |
|----|----|---|---|-------------|---------------------|----------|--------|
| 80 | 30 | 3 | 6 | 50-1-3991 | steel | raw | 74g |
| 80 | 40 | 3 | 6 | 50-1-3992 | steel | raw | 92.5g |
| 80 | 50 | 3 | 6 | 50-1-3993 | steel | raw | 111.4g |
| 80 | 60 | 3 | 6 | 50-1-3994 | steel | raw | 130.2g |
| 80 | 80 | 3 | 6 | 50-1-3995 | steel | raw | 168g |
| 80 | 30 | 3 | 6 | 52-1-3771 | 304 stainless steel | deburred | 74g |
| 80 | 40 | 3 | 6 | 52-1-3772 | 304 stainless steel | deburred | 92.5g |
| 80 | 50 | 3 | 6 | 52-1-3773 | 304 stainless steel | deburred | 111.4g |
| 80 | 60 | 3 | 6 | 52-1-3774 | 304 stainless steel | deburred | 130.2g |
| 80 | 80 | 3 | 6 | 52-1-3775 | 304 stainless steel | deburred | 168g |



Leaves for Modulo hinges - thickness 4mm

Leaves can be combined together and with either a 8mm diameter expanded pin (BG) (part numbers 27-1-3821, 27-1-3824) or a 8mm diameter headed pin (BT) (part numbers 27-1-3827, 27-1-3830) with a plug (part numbers 27-1-3833, 27-1-3836).

| A | B | C | D | part number | material | finish | weight |
|-----|----|---|---|-------------|---------------------|----------|--------|
| 100 | 30 | 4 | 8 | 50-1-3996 | steel | raw | 131g |
| 100 | 40 | 4 | 8 | 50-1-3997 | steel | raw | 162.5g |
| 100 | 50 | 4 | 8 | 50-1-3998 | steel | raw | 194g |
| 100 | 60 | 4 | 8 | 50-1-3999 | steel | raw | 225.3g |
| 100 | 80 | 4 | 8 | 50-1-4000 | steel | raw | 288g |
| 100 | 30 | 4 | 8 | 52-1-3776 | 304 stainless steel | deburred | 131g |
| 100 | 40 | 4 | 8 | 52-1-3777 | 304 stainless steel | deburred | 162.5g |
| 100 | 50 | 4 | 8 | 52-1-3778 | 304 stainless steel | deburred | 194g |
| 100 | 60 | 4 | 8 | 52-1-3779 | 304 stainless steel | deburred | 225.3g |
| 100 | 80 | 4 | 8 | 52-1-3780 | 304 stainless steel | deburred | 288g |



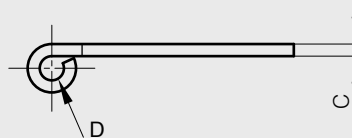
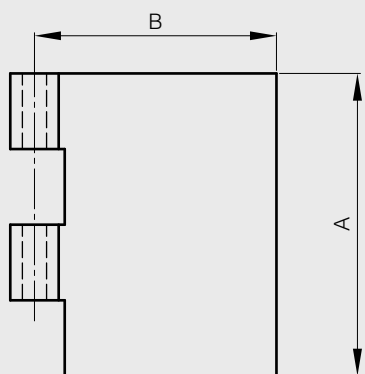


Hinges / Heavy duty hinges

Leaves for Modulo hinges - thickness 5mm

Leaves can be combined together and with either a 10mm diameter expanded pin (BG) (part numbers 27-1-3822, 27-1-3825) or a 10mm diameter headed pin (BT) (part numbers 27-1-3828, 27-1-3831) with a plug (part numbers 27-1-3834, 27-1-3837).

| A | B | C | D | part number | material | finish | weight |
|-----|----|---|----|-------------|---------------------|----------|--------|
| 120 | 30 | 5 | 10 | 50-1-4001 | steel | raw | 211g |
| 120 | 40 | 5 | 10 | 50-1-4002 | steel | raw | 258g |
| 120 | 50 | 5 | 10 | 50-1-4003 | steel | raw | 305.2g |
| 120 | 60 | 5 | 10 | 50-1-4004 | steel | raw | 352.3g |
| 120 | 80 | 5 | 10 | 50-1-4005 | steel | raw | 446.5g |
| 120 | 30 | 5 | 10 | 52-1-3781 | 304 stainless steel | deburred | 211g |
| 120 | 40 | 5 | 10 | 52-1-3782 | 304 stainless steel | deburred | 258g |
| 120 | 50 | 5 | 10 | 52-1-3783 | 304 stainless steel | deburred | 305.2g |
| 120 | 60 | 5 | 10 | 52-1-3784 | 304 stainless steel | deburred | 352.3g |
| 120 | 80 | 5 | 10 | 52-1-3785 | 304 stainless steel | deburred | 446.5g |





Leaves for Modulo pin hinges - thickness 3mm

Leaves can be combined together and with either a 6mm diameter expanded pin (BG) (part numbers 27-1-3820, 27-1-3823) or a 6mm diameter headed pin (BT) (part numbers 27-1-3826, 27-1-3829) with a plug (part numbers 27-1-3832, 27-1-3835).

| A | B | C | D | part number | material | finish | weight |
|----|-----|---|---|-------------|---------------------|----------|--------|
| 40 | 20 | 3 | 6 | 12-1-3941 | steel | raw | 24.6g |
| 40 | 30 | 3 | 6 | 12-1-3866 | steel | raw | 36.9g |
| 40 | 50 | 3 | 6 | 12-1-3867 | steel | raw | 55.7g |
| 40 | 80 | 3 | 6 | 12-1-3868 | steel | raw | 84g |
| 40 | 120 | 3 | 6 | 12-1-3943 | steel | raw | 126g |
| 40 | 20 | 3 | 6 | 12-1-3942 | 304 stainless steel | deburred | 24.6g |
| 40 | 30 | 3 | 6 | 12-1-3869 | 304 stainless steel | deburred | 36.9g |
| 40 | 50 | 3 | 6 | 12-1-3870 | 304 stainless steel | deburred | 55.7g |
| 40 | 80 | 3 | 6 | 12-1-3871 | 304 stainless steel | deburred | 84g |
| 40 | 120 | 3 | 6 | 12-1-3944 | 304 stainless steel | deburred | 126g |



Leaves for Modulo pin hinges - thickness 4mm

Leaves can be combined together and with either a 8mm diameter expanded pin (BG) (part numbers 27-1-3821, 27-1-3824) or a 8mm diameter headed pin (BT) (part numbers 27-1-3827, 27-1-3830) with a plug (part numbers 27-1-3833, 27-1-3836).

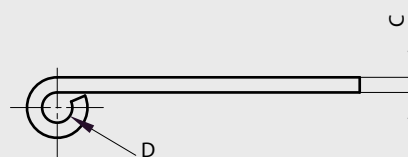
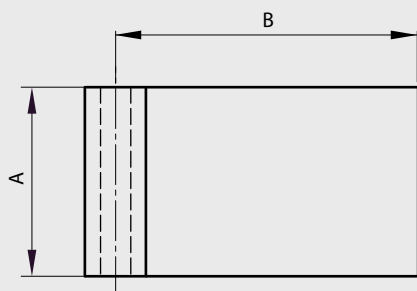
| A | B | C | D | part number | material | finish | weight |
|----|----|---|---|-------------|---------------------|----------|--------|
| 50 | 30 | 4 | 8 | 12-1-3872 | steel | raw | 65.6g |
| 50 | 50 | 4 | 8 | 12-1-3873 | steel | raw | 97g |
| 50 | 80 | 4 | 8 | 12-1-3874 | steel | raw | 144g |
| 50 | 30 | 4 | 8 | 12-1-3875 | 304 stainless steel | deburred | 65.6g |
| 50 | 50 | 4 | 8 | 12-1-3876 | 304 stainless steel | deburred | 97g |
| 50 | 80 | 4 | 8 | 12-1-3877 | 304 stainless steel | deburred | 144g |



Leaves for Modulo pin hinges - thickness 5mm

Leaves can be combined together and with either a 10mm diameter expanded pin (BG) (part numbers 27-1-3822, 27-1-3825) or a 10mm diameter headed pin (BT) (part numbers 27-1-3828, 27-1-3831) with a plug (part numbers 27-1-3834, 27-1-3837).

| A | B | C | D | part number | material | finish | weight |
|----|----|---|----|-------------|---------------------|----------|--------|
| 60 | 40 | 5 | 10 | 12-1-3878 | steel | raw | 129g |
| 60 | 60 | 5 | 10 | 12-1-3879 | steel | raw | 176.2g |
| 60 | 80 | 5 | 10 | 12-1-3880 | steel | raw | 224g |
| 60 | 40 | 5 | 10 | 12-1-3881 | 304 stainless steel | deburred | 129g |
| 60 | 60 | 5 | 10 | 12-1-3882 | 304 stainless steel | deburred | 176.2g |
| 60 | 80 | 5 | 10 | 12-1-3883 | 304 stainless steel | deburred | 224g |





Hinges / Heavy duty hinges

The hinge pin is made of either an expanded pin (BG) or a headed pin (BT) with a plug (VA). Putting together a headed pin (BT) and a plug (VA) gives the impression of a riveted pin which is not removable.

Expanded pin BG for Modulo system

This pin alone enables you to make a hinge pin for Modulo hinges.

| D | L | part number | material | finish | weight |
|----|-----|-------------|---------------------|-------------|--------|
| 6 | 80 | 27-1-3820 | steel | zinc plated | 17.7g |
| 8 | 100 | 27-1-3821 | steel | zinc plated | 39.4g |
| 10 | 120 | 27-1-3822 | steel | zinc plated | 74g |
| 6 | 80 | 27-1-3823 | 304 stainless steel | raw | 17.7g |
| 8 | 100 | 27-1-3824 | 304 stainless steel | raw | 39.4g |
| 10 | 120 | 27-1-3825 | 304 stainless steel | raw | 74g |



BG
Broche Gonflée
Expanded pin
Gestauchter Stift

Headed pin BT for Modulo system

This pin combined with a plug (VA) enables you to make a hinge pin for Modulo hinges.

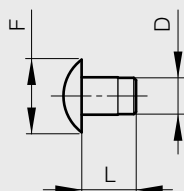
| D | E | L | part number | material | finish | weight |
|----|---|-----|-------------|---------------------|-------------|--------|
| 6 | 3 | 66 | 27-1-3826 | steel | zinc plated | 15.5g |
| 8 | 4 | 86 | 27-1-3827 | steel | zinc plated | 35.5g |
| 10 | 5 | 106 | 27-1-3828 | steel | zinc plated | 68.4g |
| 6 | 3 | 66 | 27-1-3829 | 304 stainless steel | raw | 15.5g |
| 8 | 4 | 86 | 27-1-3830 | 304 stainless steel | raw | 35.5g |
| 10 | 5 | 106 | 27-1-3831 | 304 stainless steel | raw | 68.4g |



Plug (VA) for Modulo system

This plug combined with a headed pin (BT) enables you to make a hinge pin for Modulo hinges.

| D | F | L | part number | material | finish | weight |
|----|----|----|-------------|---------------------|-------------|--------|
| 6 | 12 | 12 | 27-1-3832 | steel | zinc plated | 3.3g |
| 8 | 16 | 12 | 27-1-3833 | steel | zinc plated | 6.3g |
| 10 | 20 | 12 | 27-1-3834 | steel | zinc plated | 10.5g |
| 6 | 12 | 12 | 27-1-3835 | 304 stainless steel | raw | 3.3g |
| 8 | 16 | 12 | 27-1-3836 | 304 stainless steel | raw | 6.3g |
| 10 | 20 | 12 | 27-1-3837 | 304 stainless steel | raw | 10.5g |



VA
VAsse
Plug
Stopfen



BT
Broche à Tête
Headed pin
Stift mit Kopf



Die-cast steel hinges for railway applications

Riveted pin

Other dimensions or variants are available on request.

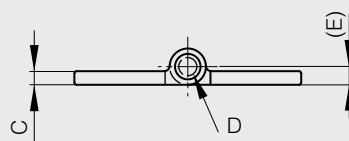
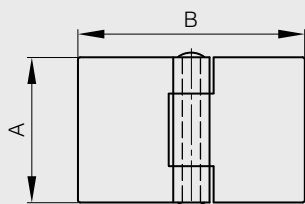
| A | B | C | D | E | note | part number | material | finish | weight |
|----|----|---|---|---|---------------------|------------------|---------------------|--------|--------|
| 32 | 32 | 3 | 4 | 4 | 1 MR (railway code) | 72-7-3346 | steel | raw | 33g |
| 32 | 50 | 3 | 4 | 4 | 3 MR (railway code) | 72-7-3348 | steel | raw | 47g |
| 50 | 50 | 3 | 4 | 4 | 4 MR (railway code) | 72-7-3349 | steel | raw | 75g |
| 50 | 50 | 5 | 6 | 6 | 7 MR (railway code) | 72-7-3352 | steel | raw | 122g |
| 50 | 80 | 3 | 4 | 4 | 6 MR (railway code) | 72-7-3351 | steel | raw | 119g |
| 50 | 80 | 5 | 6 | 6 | 9 MR (railway code) | 72-7-3354 | steel | raw | 182g |
| 50 | 50 | 3 | 4 | 4 | 4 MR (railway code) | 72-7-3990 | 304 stainless steel | raw | 75g |
| 50 | 80 | 5 | 6 | 6 | 9 MR (railway code) | 72-7-4187 | 304 stainless steel | raw | 182g |

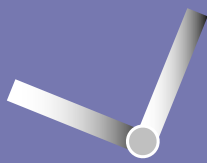


Riveted pin

Other dimensions or variants are available on request.

| A | B | C | D | E | note | part number | material | finish | weight |
|----|----|---|---|---|----------------------|------------------|---------------------|--------|--------|
| 32 | 50 | 3 | 4 | 4 | 19 MR (railway code) | 72-7-3380 | steel | raw | 47g |
| 50 | 50 | 3 | 4 | 4 | 20 MR (railway code) | 72-7-3381 | steel | raw | 75g |
| 50 | 50 | 5 | 6 | 6 | 23 MR (railway code) | 72-7-3384 | steel | raw | 122g |
| 50 | 80 | 5 | 6 | 6 | 25 MR (railway code) | 72-7-3386 | steel | raw | 182g |
| 50 | 50 | 3 | 4 | 4 | 20 MR (railway code) | 72-7-3992 | 304 stainless steel | raw | 75g |
| 50 | 80 | 3 | 4 | 4 | 22 MR (railway code) | 72-7-3993 | 304 stainless steel | raw | 119g |





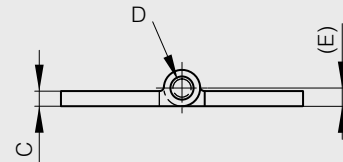
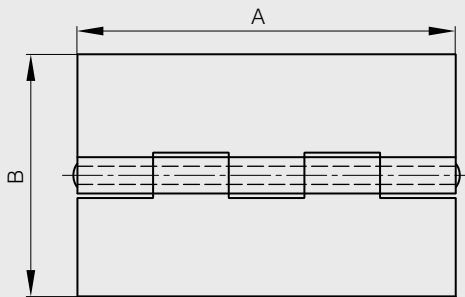
Hinges / Heavy duty hinges

Die-cast steel hinges for railway applications

Riveted pin

Other dimensions or variants are available on request.

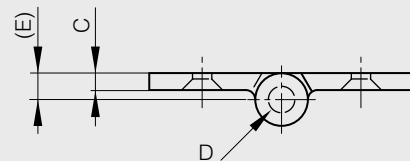
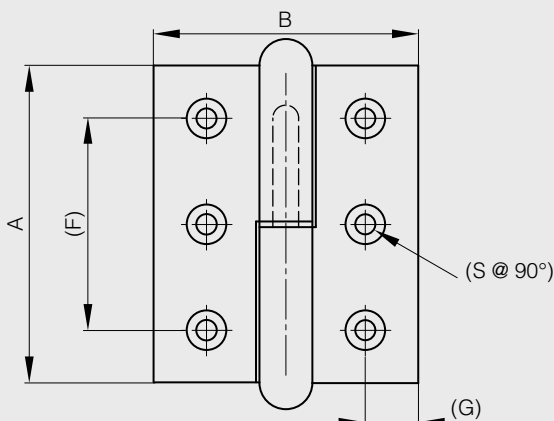
| A | B | C | D | E | note | part number | material | finish | weight |
|-----|-----|---|----|----|----------------------|-------------|---------------------|--------|--------|
| 80 | 80 | 5 | 6 | 6 | 1 FR (railway code) | 72-7-3410 | steel | raw | 283g |
| 80 | 80 | 8 | 10 | 10 | 14 FR (railway code) | 72-7-3414 | steel | raw | 485g |
| 80 | 130 | 5 | 6 | 6 | 3 FR (railway code) | 72-7-3412 | steel | raw | 436g |
| 80 | 130 | 8 | 10 | 10 | 16 FR (railway code) | 72-7-3416 | steel | raw | 761g |
| 125 | 80 | 5 | 6 | 6 | 11 FR (railway code) | 72-7-3413 | steel | raw | 440g |
| 125 | 130 | 8 | 10 | 10 | 24 FR (railway code) | 72-7-3417 | steel | raw | 1240g |
| 160 | 130 | 8 | 10 | 10 | 34 FR (railway code) | 72-7-3420 | steel | raw | 1457g |
| 200 | 130 | 8 | 10 | 10 | 35 FR (railway code) | 72-7-3421 | steel | raw | 1920g |
| 80 | 80 | 5 | 6 | 6 | 1 FR (railway code) | 72-7-3991 | 304 stainless steel | raw | 283g |



Heavy duty lift-off hinges for railway applications

With raw brass washer

| A | B | C | D | E | F | G | S | note | part number | material | finish | weight |
|----|----|-----|---|---|----|----|-----|----------------------------|-------------|----------|--------|--------|
| 48 | 40 | 3 | 4 | 4 | 32 | 8 | 4 | type 2 symmetric not shown | 14-7-3328 | steel | raw | 52g |
| 48 | 40 | 3 | 4 | 4 | 32 | 8 | 4 | type 1 as shown below | 14-7-3329 | steel | raw | 52g |
| 60 | 50 | 3.5 | 5 | 5 | 40 | 10 | 5 | type 2 symmetric not shown | 14-7-3330 | steel | raw | 104g |
| 60 | 50 | 3.5 | 5 | 5 | 40 | 10 | 5 | type 1 as shown below | 14-7-3331 | steel | raw | 104g |
| 72 | 60 | 4 | 6 | 6 | 48 | 12 | 6.5 | type 2 symmetric not shown | 14-7-3332 | steel | raw | 156g |
| 72 | 60 | 4 | 6 | 6 | 48 | 12 | 6.5 | type 1 as shown below | 14-7-3333 | steel | raw | 156g |
| 84 | 70 | 4.5 | 7 | 7 | 56 | 14 | 7.5 | type 2 symmetric not shown | 14-7-3334 | steel | raw | 245g |
| 84 | 70 | 4.5 | 7 | 7 | 56 | 14 | 7.5 | type 1 as shown below | 14-7-3335 | steel | raw | 245g |
| 96 | 80 | 5 | 8 | 8 | 66 | 16 | 8.5 | type 2 symmetric not shown | 14-7-3336 | steel | raw | 360g |
| 96 | 80 | 5 | 8 | 8 | 66 | 16 | 8.5 | type 1 as shown below | 14-7-3337 | steel | raw | 360g |

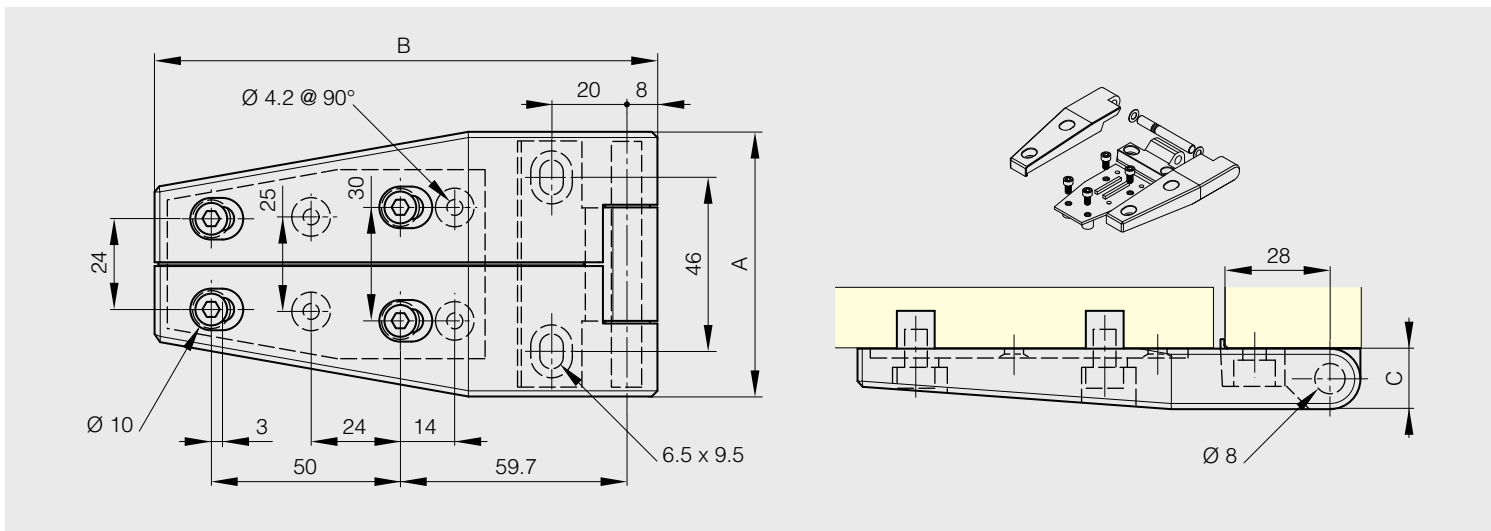
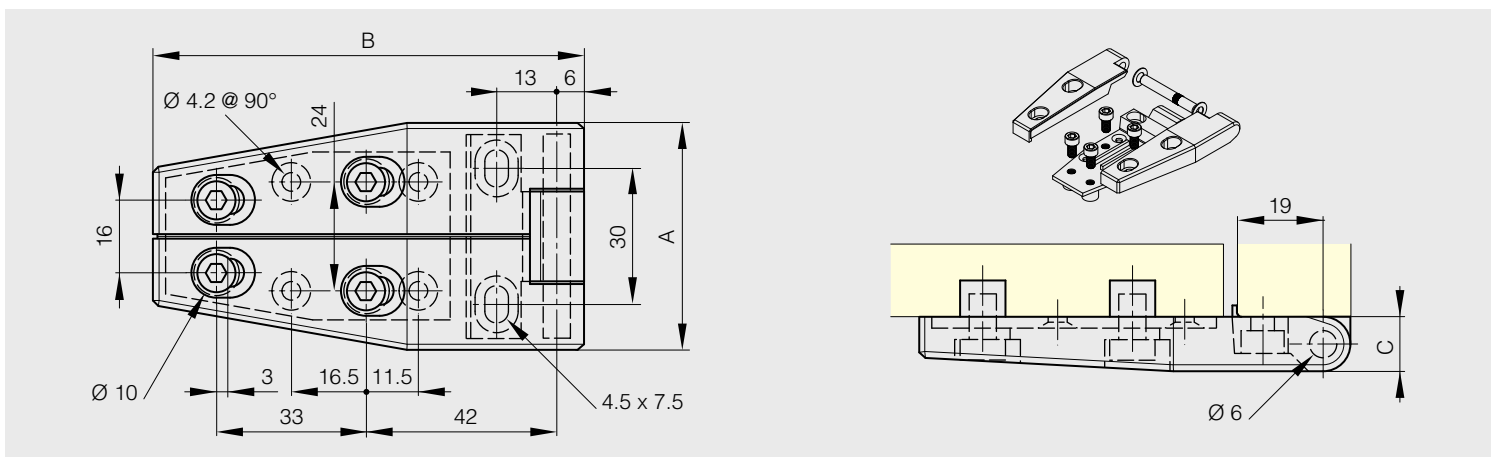
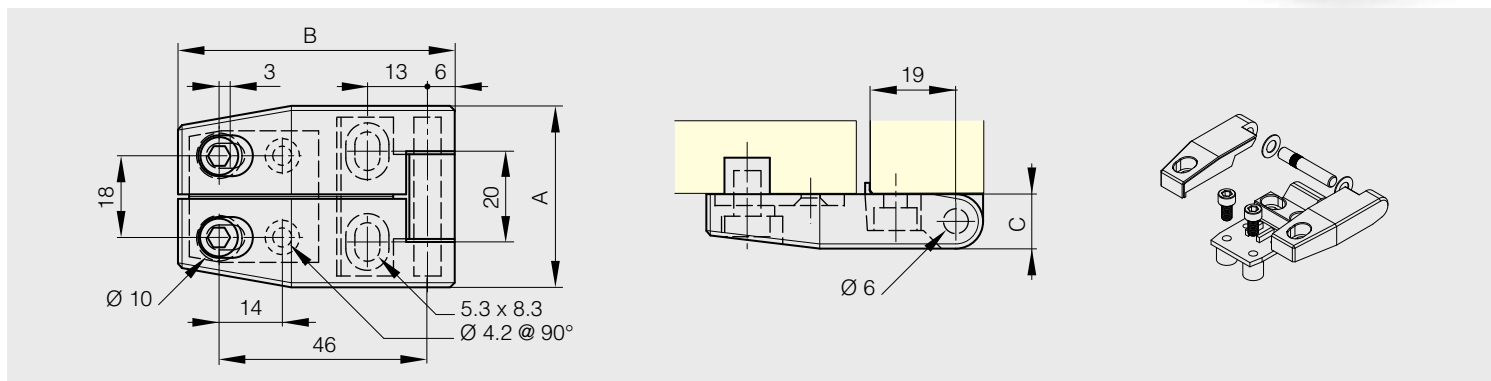




Hinges for insulated doors

This hinge (part of the Klimaflex system) is used in association with the latch system on page 147

| A | B | C | part number | material | finish | weight |
|----|-----|------------------|------------------|---------------|--------|--------|
| 40 | 61 | 12 | 72-7-4169 | zinc die-cast | black | 140g |
| 50 | 95 | 72-7-4170 | zinc die-cast | black | 222g | |
| 70 | 133 | 16 | 72-7-4171 | zinc die-cast | black | 492g |



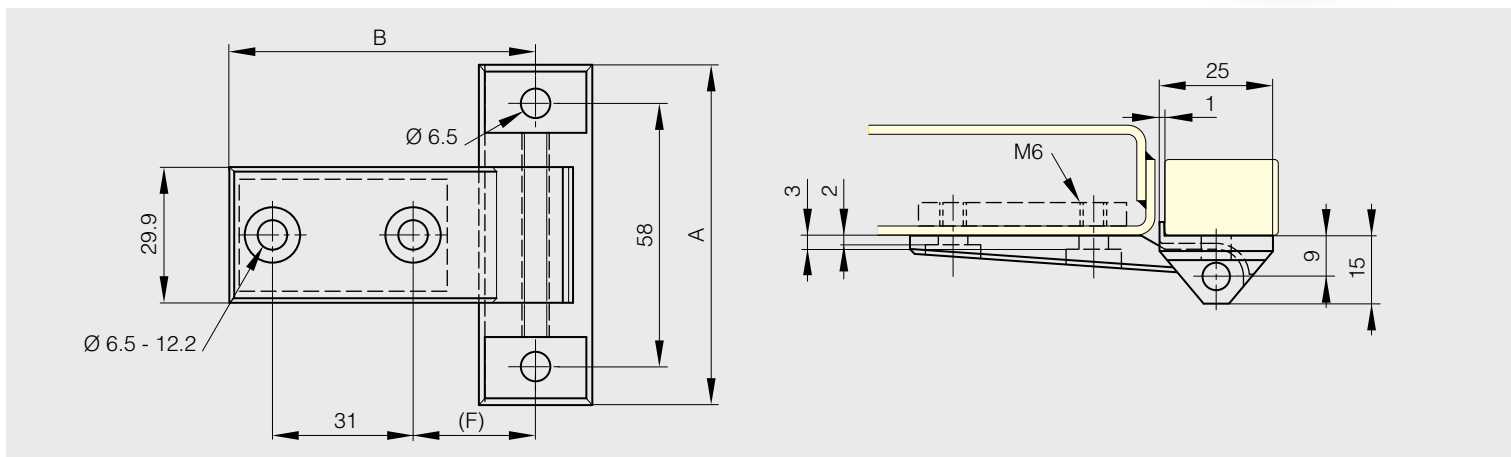


Hinges / Heavy duty hinges

Hinges for insulated doors

Hinge supplied with threaded plate and bolts

| A | B | F | part number | material | finish | weight |
|----|------|----|-------------|---------------|--------|--------|
| 75 | 67.5 | 27 | 72-7-4172 | zinc die-cast | black | 192g |
| 78 | 85.5 | 45 | 72-7-4173 | zinc die-cast | black | 226g |

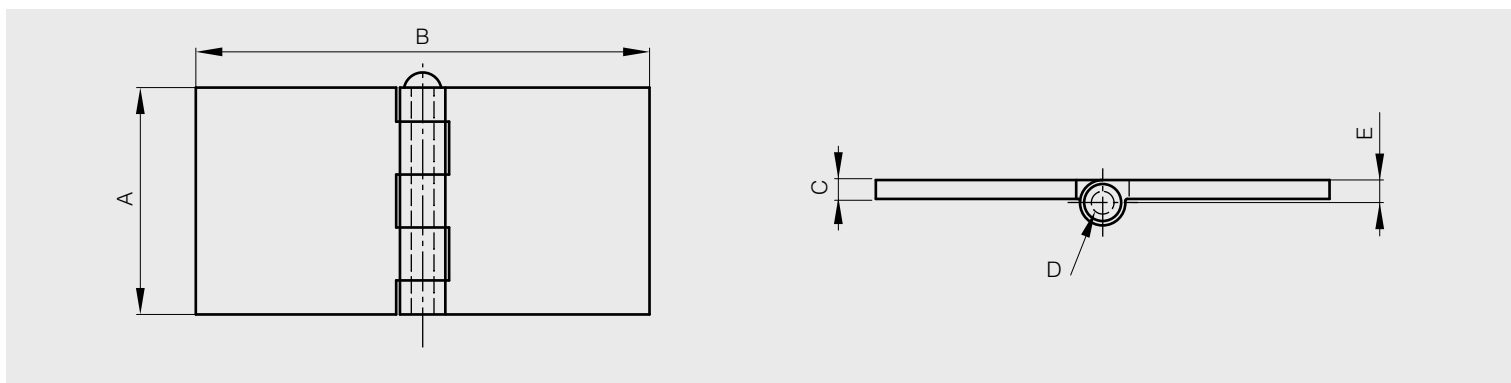


Die-cast steel hinge with removable pin

The same hinge is available with a stop at 90° (reference 72-1-0204)

Removable pin in brass

| A | B | C | D | E | part number | material | finish | weight |
|----|-----|---|---|---|-------------|---------------------|---------|--------|
| 60 | 120 | 5 | 6 | 6 | 72-1-3502 | 304 stainless steel | harshed | 334g |

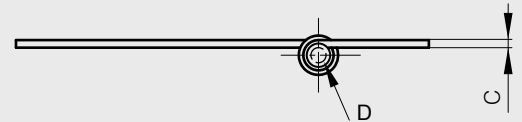
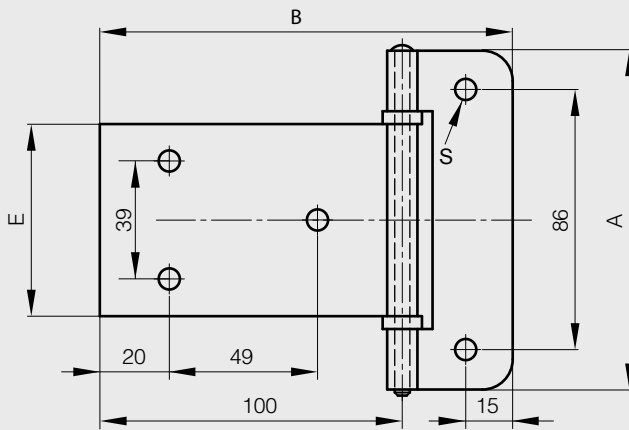




Removable pin hinge

Nylon washers

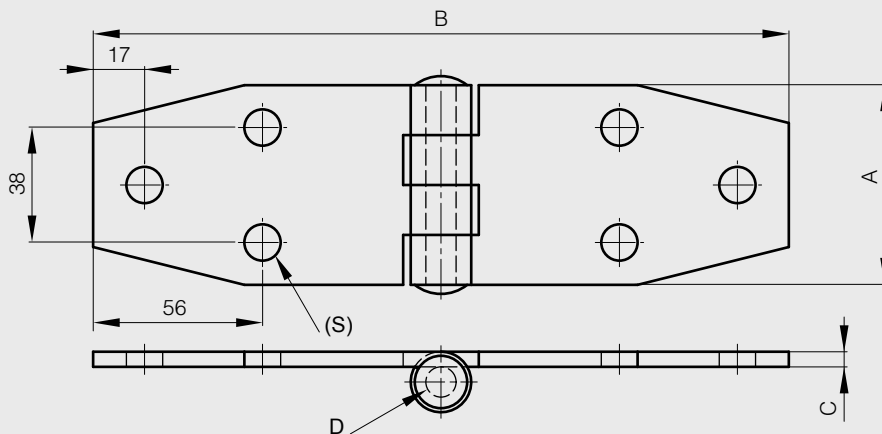
| A | B | C | D | E | S | note | part number | material | finish | weight |
|-----|-------|-----|---|------|---|-----------|-------------|---------------------|--------|--------|
| 112 | 136.5 | 2.5 | 5 | 63.5 | | undrilled | 50-1-3315 | steel | raw | 244g |
| 112 | 136.5 | 2.5 | 5 | 63.5 | | undrilled | 52-1-3605 | 304 stainless steel | raw | 248g |
| 112 | 136.5 | 2.5 | 5 | 63.5 | 7 | drilled | 52-1-3606 | 304 stainless steel | raw | 248g |



Heavy duty hinge

Stainless steel riveted pin

| A | B | C | D | S | part number | material | finish | weight |
|----|-----|---|----|----|-------------|----------|-------------|--------|
| 66 | 230 | 5 | 10 | 12 | 50-1-4060 | steel | zinc plated | 622g |



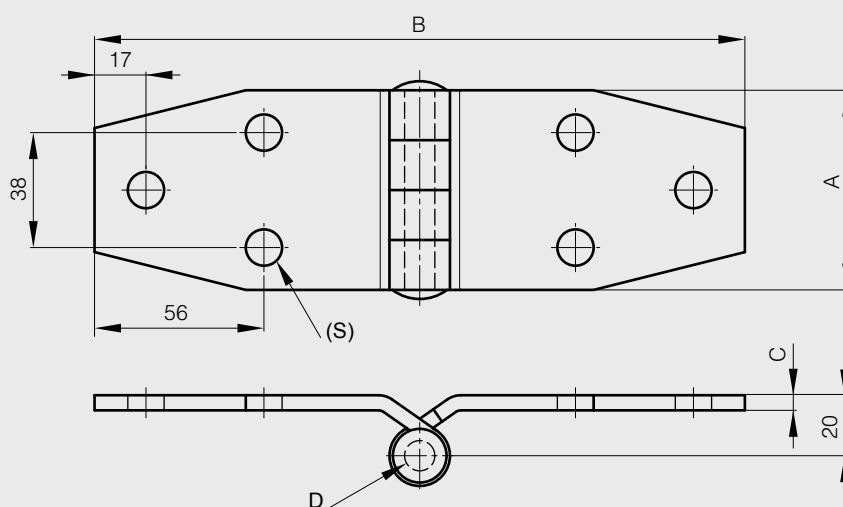


Hinges / Heavy duty hinges

Heavy duty hinge

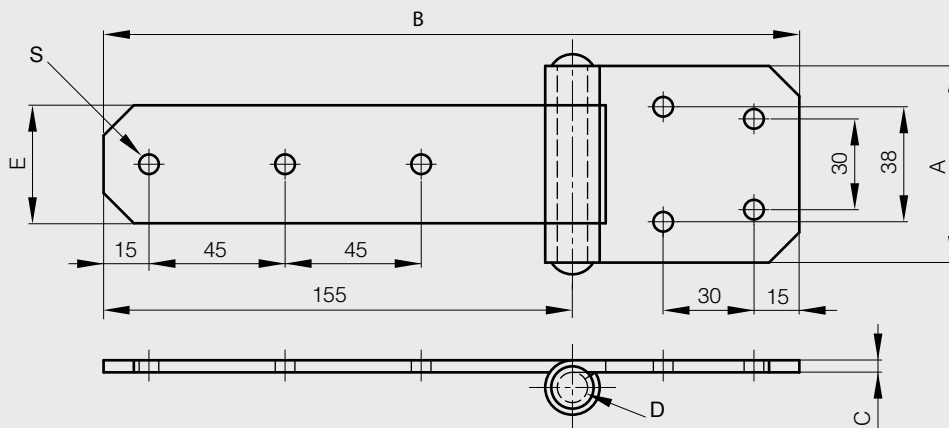
Stainless steel riveted pin

| A | B | C | D | S | part number | material | finish | weight |
|----|-----|---|----|----|-------------|----------|-------------|--------|
| 66 | 215 | 5 | 10 | 12 | 50-1-4061 | steel | zinc plated | 622g |



Riveted pin

| A | B | C | D | E | S | note | part number | material | finish | weight |
|----|-----|---|----|----|-----|-----------|-------------|---------------------|------------|--------|
| 65 | 230 | 4 | 10 | 39 | 6.5 | drilled | 52-1-3553 | 304 stainless steel | brightened | 430g |
| 65 | 230 | 4 | 10 | 39 | | undrilled | 52-1-3593 | 304 stainless steel | brightened | 450g |

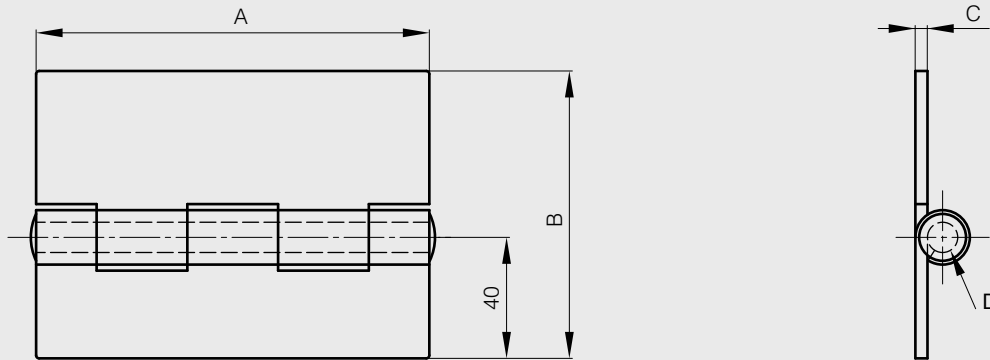




Heavy duty hinge

Stainless steel riveted pin

| A | B | C | D | part number | material | finish | weight |
|-----|----|---|----|-------------|----------|--------|--------|
| 130 | 95 | 4 | 10 | 50-1-3944 | steel | raw | 580g |



Heavy duty pin hinge

With chamfered edges

| A | B | C | D | E | F | H | S | part number | material | finish | weight |
|----|----|----|---|----|----|-----|--------|-------------|---------------------|---------|--------|
| 64 | 13 | 16 | 6 | 16 | 16 | 9.5 | M5x6 | 12-7-3810 | 303 stainless steel | brushed | 90g |
| 76 | 13 | 19 | 6 | 19 | 18 | 11 | M6x7.5 | 12-7-3811 | 303 stainless steel | brushed | 130g |

