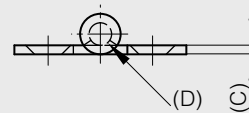
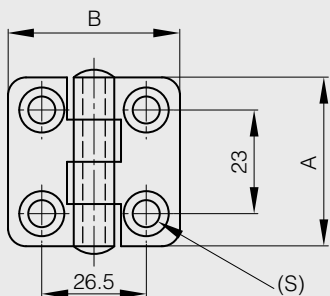




Hinges for marine applications

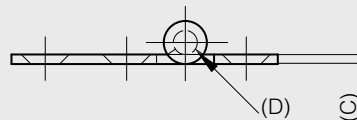
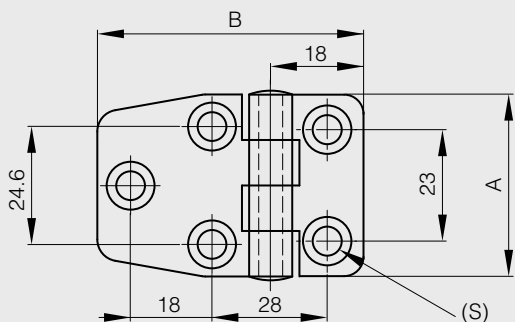
Riveted pin

A	B	C	D	S	part number	material	finish	weight
36.5	36.5	2	5	6	52-1-3945	316 stainless steel	polished	32g



Riveted pin

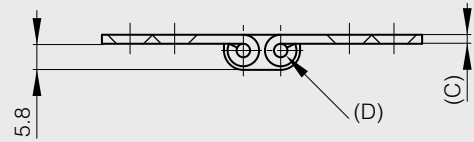
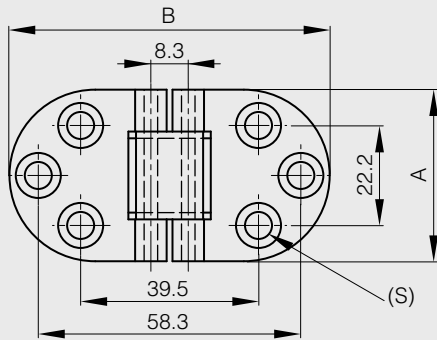
A	B	C	D	S	part number	material	finish	weight
36.5	56.5	2	5	6	52-1-3947	316 stainless steel	polished	40g





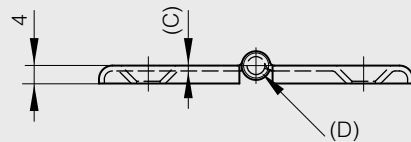
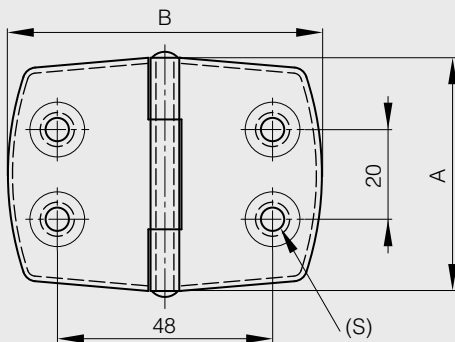
Hinges for marine applications

A	B	C	D	S	part number	material	finish	weight
38.1	71.1	2	3	6	52-1-3898	316 stainless steel	polished	42g



Riveted pin

A	B	C	D	S	part number	material	finish	weight
52	70	1.2	4	5,2	52-1-3964	316 stainless steel	polished	44g

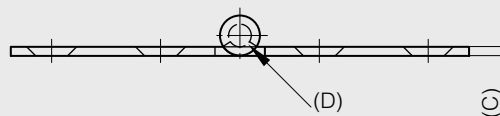
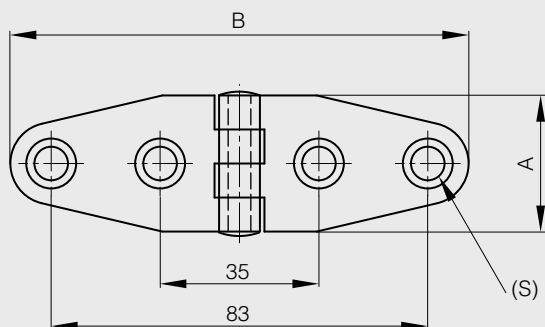




Hinges for marine applications

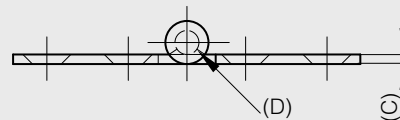
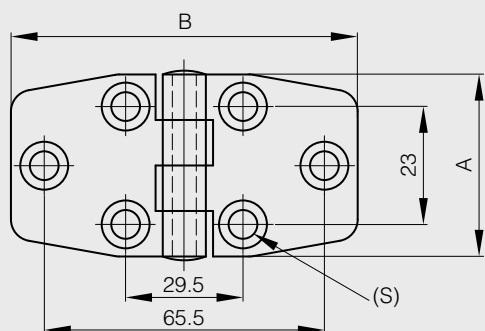
Riveted pin

A	B	C	D	S	part number	material	finish	weight
30	101	2	5	6	52-1-3954	316 stainless steel	polished	44g



Riveted pin

A	B	C	D	S	part number	material	finish	weight
36.5	76	2	4	6	52-1-3944	316 stainless steel	polished	50g

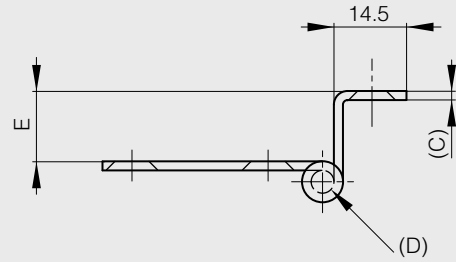
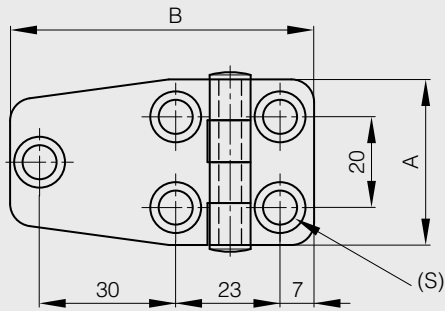




Hinges for marine applications

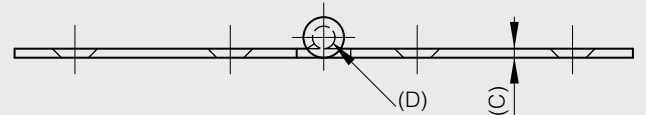
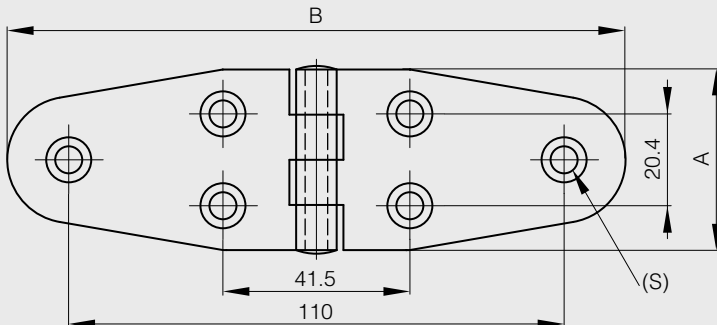
Riveted pin

A	B	C	D	E	S	part number	material	finish	weight
36.5	48.5	2	5	19.2	6	52-1-3948	316 stainless steel	polished	54g
36.5	48.5	2	5	15.9	6	52-1-3949	316 stainless steel	polished	54g
36.5	48.5	2	5	10	6	52-1-3950	316 stainless steel	polished	54g



Riveted pin

A	B	C	D	S	part number	material	finish	weight
40.1	137.3	2	5	6	52-1-3953	316 stainless steel	polished	80g



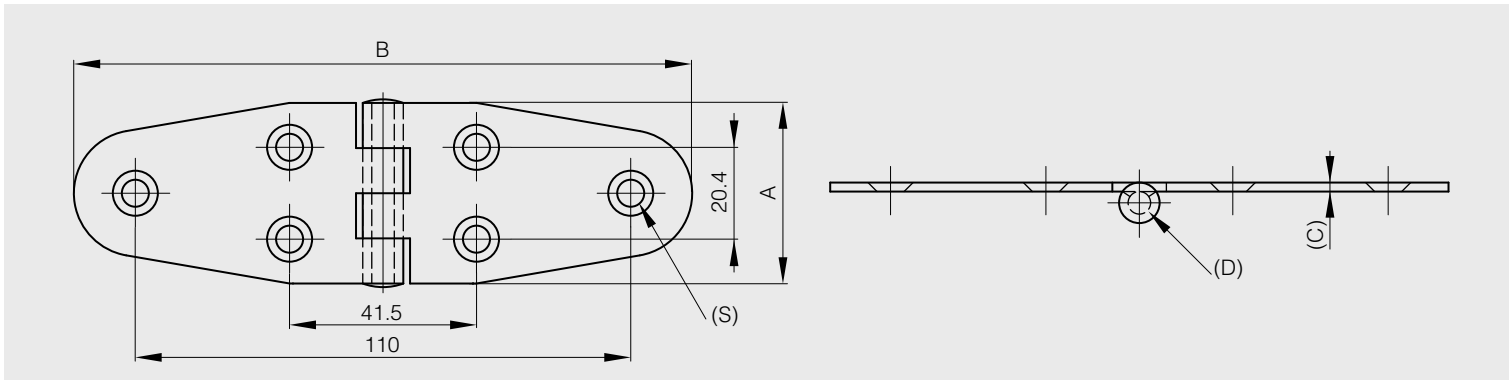


Hinges for marine applications

Riveted pin

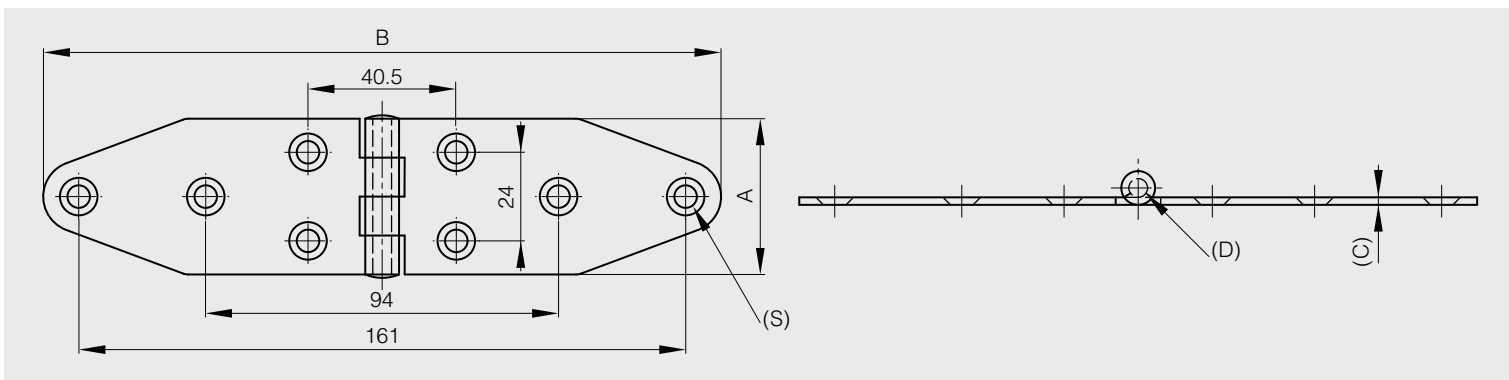
The knuckle is on the opposite side from countersunk holes unlike other hinges in this range.

A	B	C	D	S	part number	material	finish	weight
40.1	137.3	2	5	6	52-1-3946	316 stainless steel	polished	80g



Riveted pin

A	B	C	D	S	part number	material	finish	weight
38	178	2	5	6	52-1-3957	316 stainless steel	polished	96g





Hinge for marine applications

Riveted pin

The knuckle is on the opposite side from countersunk holes unlike other hinges in this range.

A	B	C	D	S	part number	material	finish	weight
41.5	172	2	5	6	52-1-3951	316 stainless steel	polished	102g

