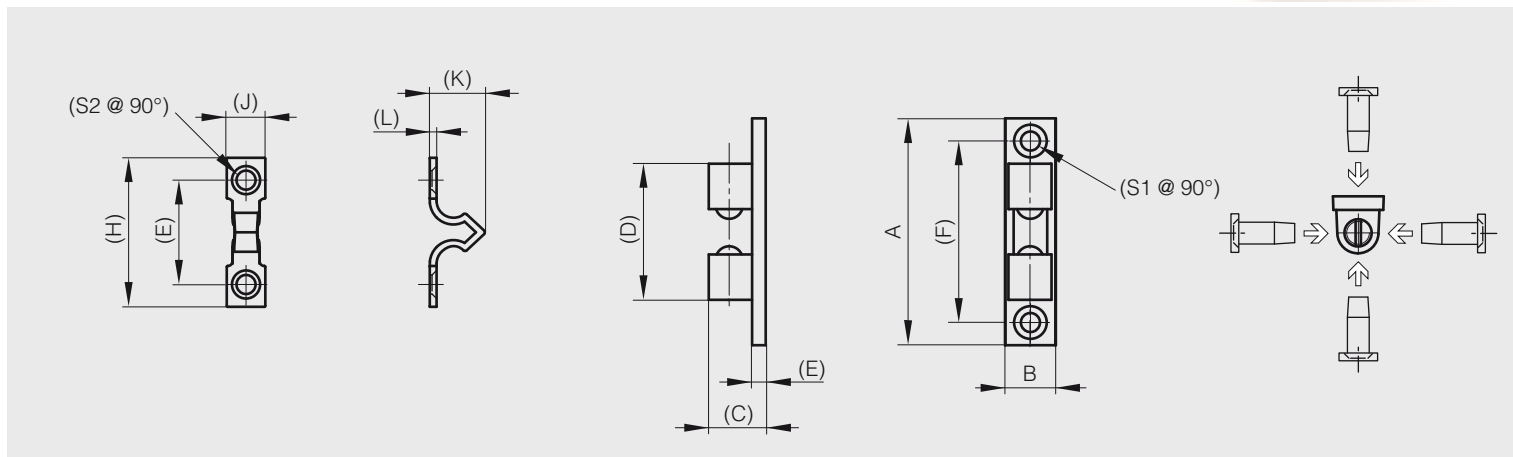


## Dual ball catches

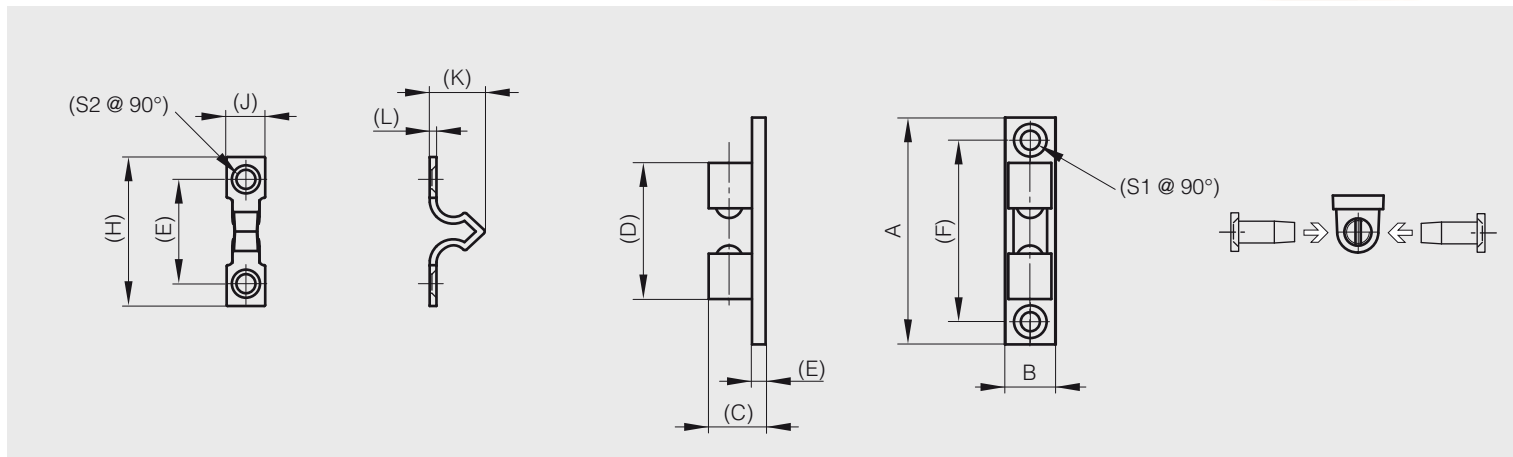
Coutersunk on both sides of the catch.  
Strike can be secured on 4 sides of the catch

A	B	C	D	E	F	G	H	J	K	L	S1	S2	part number	material	finish	weight
50	11	12.5	30	3	40	21	30.5	8.1	18	1.4	4.2	3.5	16-7-3469	zinc die-cast	brass	21.5g
60	14.5	14.5	38	3	48	27	42	10	20.1	2.0	4.2	4.2	16-7-3470	zinc die-cast	brass	37.5g
70	17.5	16.5	44	3.5	57	34.5	50.5	12	22.3	2.0	4.2	3.2	16-7-3471	zinc die-cast	brass	58.8g



Strike can be secured on 2 sides of the catch

A	B	C	D	E	F	G	H	J	K	L	S1	S2	part number	material	finish	weight
42	8.2	10.6	26	2.9	34	16.9	25	8	14	1.2	3.5	3.0	16-7-3423	zinc die-cast	brass	13.7g

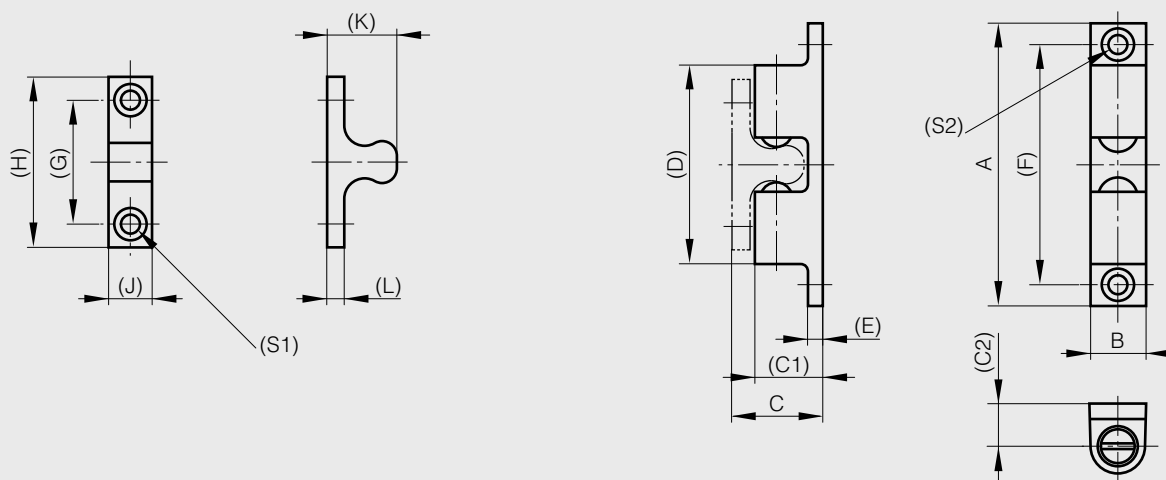




## Dual ball catches

**new!**

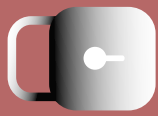
A	B	C	C1	C2	D	E	F	G	H	J	K	L	S1	S2	force	part number	material	finish	weight
42.5	8	14	10	6.5	26.7	2.5	35	16	25	7.5	11.3	2.5	3.2	6.2	3kg	<b>16-7-4211</b>	zinc die-cast	chrome plated	16g
50	10	16	12.5	7.4	29.8	3	40	20	30	9	12.3	2.5	4.2	8.2	3.3kg	<b>16-7-4212</b>	zinc die-cast	chrome plated	26g
70	13.5	21.2	17	11	49	4	60	30	42	10.5	17.2	3	4.2	8.2	3.5kg	<b>16-7-4213</b>	zinc die-cast	chrome plated	70g



## Ball catches

A	B	C	D	E	F	part number	material	finish	weight
8	7.4	4.5	6.5	9	16	<b>16-7-3330</b>	brass	raw	3.7g
10	8.5	6.5	8	11	16	<b>16-7-3331</b>	brass	raw	6.5g
12	9	7	10	13	19.5	<b>16-7-3332</b>	brass	raw	9.9g
13	10.5	7.2	10	14	19.5	<b>16-7-3333</b>	brass	raw	13.5g

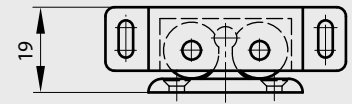
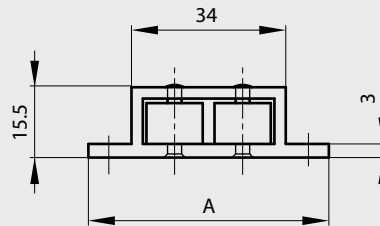
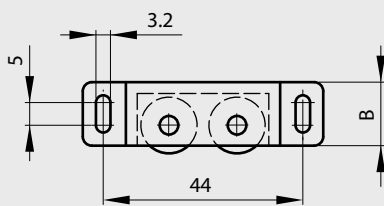




## Roller catch without counterplate

Rubber rollers

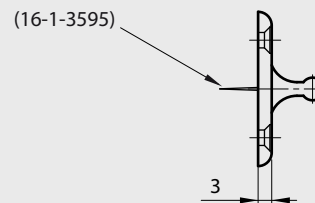
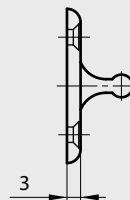
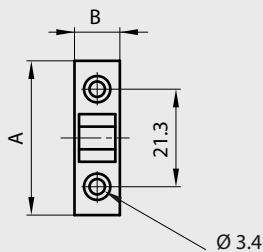
A	B	force	part number	material	finish	weight
53	14	up to 1.5kg	16-1-3594	plastic	white	9g



16-1-3594 + 16-1-3595 & 3596

## Counterplates for part number 16-1-3594

A	B	note	part number	material	finish	weight
34	10	with pin	16-1-3595	plastic	white	1.5g
34	10	without pin	16-1-3596	plastic	white	1.5g





## Snap-in knuckle catch

**new!**

Snap-in type body for easy installation on sheet metal applications.

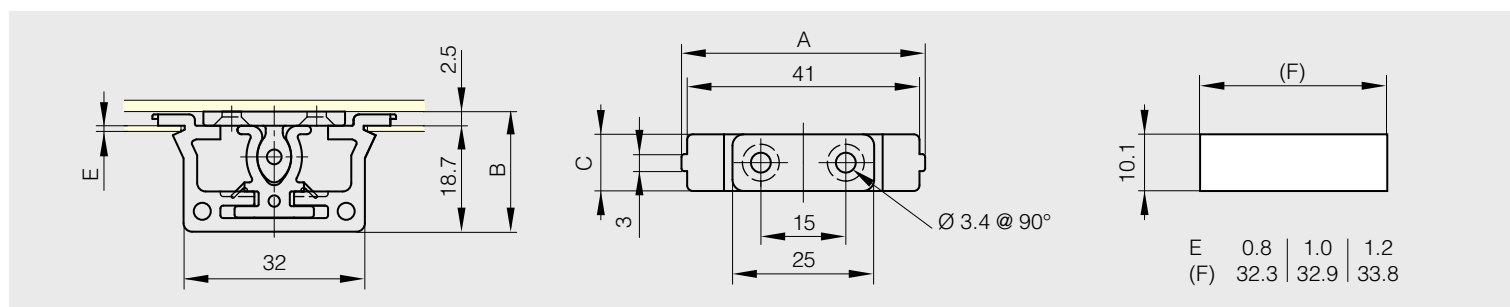
3 panel thicknesses: 0.8mm, 1.0mm and 1.2mm

Cut-out dimensions vary depending on panel thickness.

Internal catch body tolerance of 1.5mm for ease of alignment.

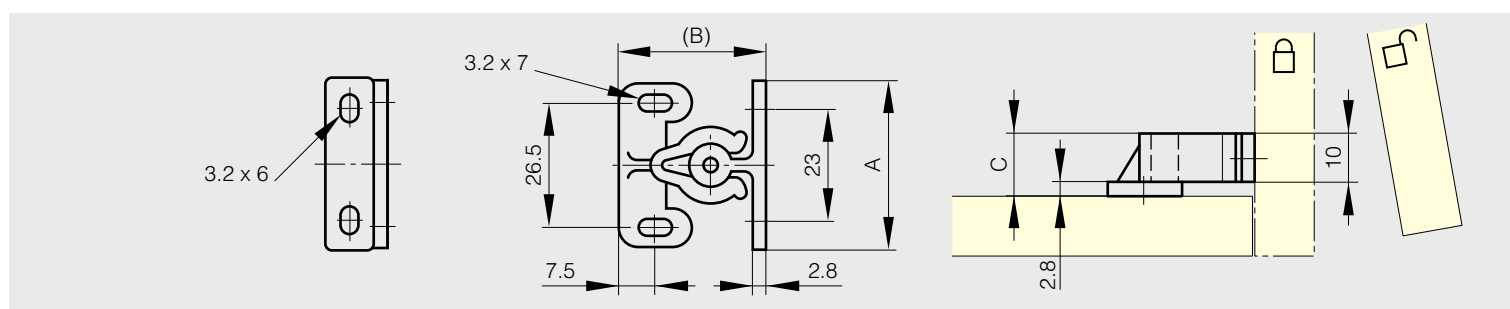


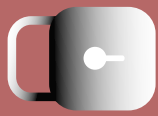
A	B	C	force	part number	material	finish	weight
43	21.2	10	2kg	<b>16-7-4214</b>	plastic	white	5.2g



## Plastic catch

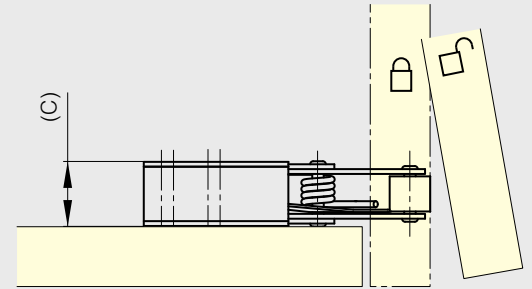
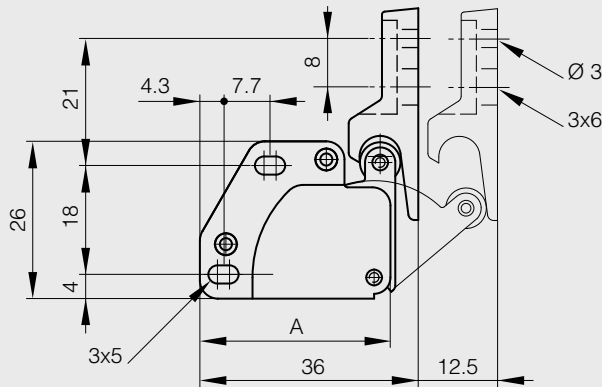
A	B	C	force	part number	material	finish	weight
35.4	30.5	13	7.1kg	<b>16-7-3860</b>	polyamide	white	4.5g





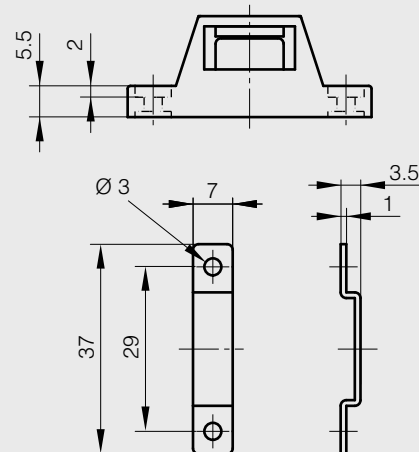
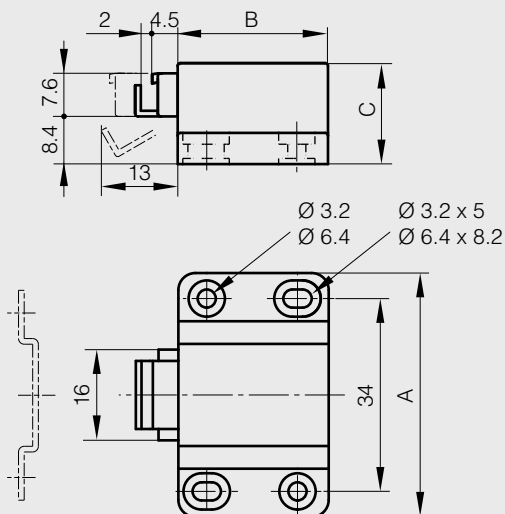
## Touch latches

A	C	part number	material	finish	weight
33	11	16-7-3838	steel	nickel plated and white plastic	20g



**new!**

A	B	C	force	part number	material	finish	weight
43	26.5	17.8	10kg	16-7-4210	plastic	black	16.3g

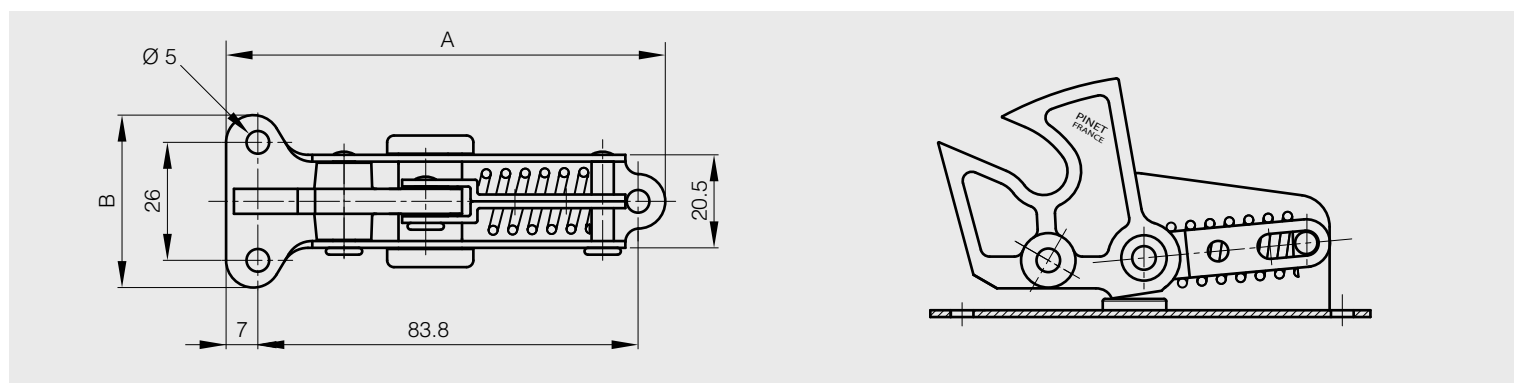




## Catch

Nylon hook, rubber damper

A	B	force	part number	material	finish	weight
97	39	8kg	16-1-3271	steel	zinc plated	100g



## Counterplate for part number 16-1-3271

Nylon roller

A	B	part number	material	finish	weight
62	22	16-1-3272	steel	chrome plated	41g

