



ZUWA Centrifugal Pumps

uncomplicated and durable

The simple and robust design is one of the key features of a centrifugal pump. They are primarily used for pumping clean water in a dry-well installation. Main applications are service water, irrigation and pressure increase.



Model CM

■ Model CM

Multistage, regular priming centrifugal pump for service water and irrigation – operates extremely quiet. For water temperatures up to 40°C.

- ▶ pump body, shaft and impeller: stainless steel
- ▶ rotary seal: ceramic/graphite
- ▶ thermal motor protection and cable

The pump is also available with electronic pump control BRIO. In this combination it can be used for domestic water supply.



Model P

■ Model P

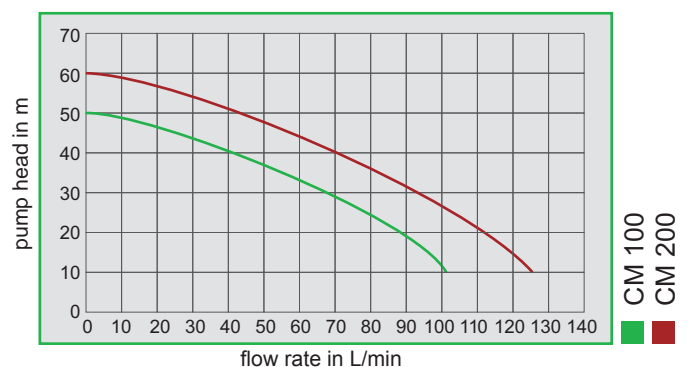
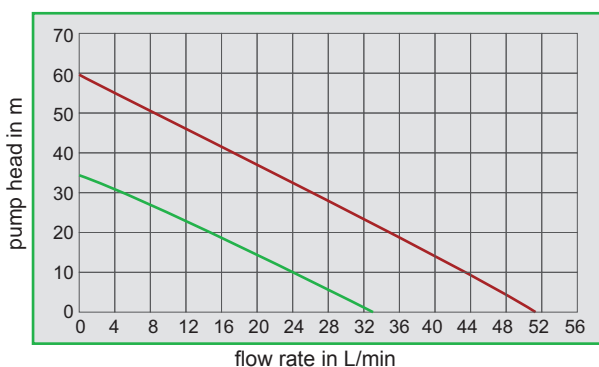
Regular priming centrifugal pump with peripheral impeller – an efficient, small pump for clean water at a most competitive price. Suited for domestic water supply, irrigation from wells or rain water basins or for industrial use.

For water temperatures up to 60°C

- ▶ pump body: cast iron or brass
- ▶ impeller: brass
- ▶ shaft: stainless steel
- ▶ thermal motor protection and cable

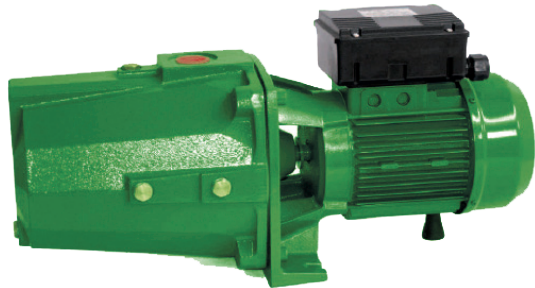
Additional Equipment – Pump Control:

ZUWA centrifugal pumps can be equipped with a pump control – ideal when the pump is used for domestic water supply or for pressure boosting. Pump starts automatically when water is withdrawn.





JET 100



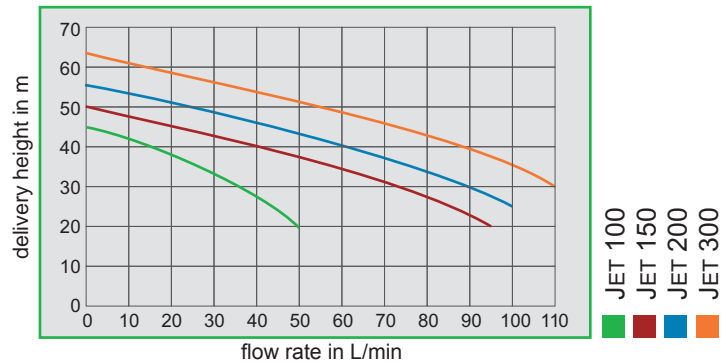
JET 150/200/300

Model JET

Self priming, durable pump for domestic water supply, irrigation or industrial use. Maximum suction height 8 metres. For water temperatures up to 50°C

- ▶ pump body: cast iron
- ▶ impeller: brass
- ▶ shaft: stainless steel
- ▶ rotary seal made of ceramic/graphite
- ▶ thermal motor protection (for 230V version) and cable

Combined with an optional pump control this pump is perfectly adapted for the use as domestic water supply system.



Technical Data

type	article No.	motor			flow rate max. in L/min	pump head max. in m	rpm max.	dimensions L x W x H	connections out/in	weight kg
		V	A	kW						
JET 100	165007	230	4,5	0,75	58	50	2850	42,5 x 19 x 20	1" - 1"	17
JET 150	165046	230	8,3	1,1	120	43	2850	55,5 x 22 x 24	1¼" - 1½"	31
JET 200	165048	230	10	1,5	120	54	2850	55,5 x 22 x 24	1¼" - 1½"	33
JET 200	165049	400	4,8	1,5	120	54	2850	55,5 x 22 x 24	1¼" - 1½"	33
JET 300	165050	400	5,8	2,2	140	62	2850	55,5 x 22 x 24	1¼" - 1½"	34
CM 100	165053	230	5,5	0,75	100	44	2850	37 x 17,5 x 18	1" - 1"	11
CM 200	165054	400	3,3	1,5	130	60	2850	42 x 19,5 x 21	1" - 1¼"	15
P 50	165004	230	2,5	0,37	32	30	2900	25,5 x 14 x 16	1" - 1"	6
P 80	165010	230	5,5	0,75	52	55	2900	28,5 x 16 x 18	1" - 1"	8,5



ZUWA-Zumpe GmbH
Pumps and Plant Protection Equipment
 Franz-Fuchs-Straße 13 - 17 • D-83410 Laufen
 fon: +49 (0)8682 89340 • fax: +49 (0)8682 893434
 e-mail: info@zuwa.de • internet: www.zuwa.de